



Automate your identification

Brady Print and Apply Machines

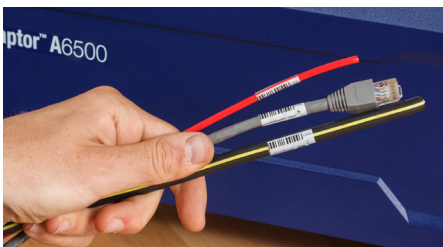
Automate your identification

As technology improves, the time to get work done seems to disappear as fast as the work comes in. Old processes slow you down, rework creates bottlenecks and errors can bring things to a full stop. Help keep things running smoothly by automating your identification.

Brady offers a family of print and apply machines that take the manual labeling process out of your hands so you can move through your work more efficiently and with less rework. With these modern automated machines, you can:

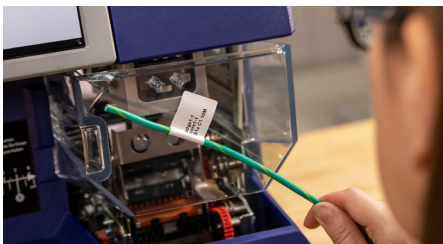
- **Increase productivity** — cut your labeling time in half to keep your output numbers high
- **Reduce errors** — get sustainable, consistent identification without the rework
- **Make changes fast** — intuitive full-color touchscreen and user interface make changing settings easy

Choose your solution



Wrapaptor™ A6500 Wrap Printer Applicator

- Print and apply self-laminating labels in five seconds
- Automate time-consuming labeling tasks
- Identify wires from 0.060 to 0.600 in. diameter



BradyPrinter A5500 Flag Printer Applicator

- Print and apply flags in five seconds
- Automate time-consuming labeling tasks
- Apply flag labels free of wrinkles, skew or edge mismatch

Wrap it fast



Wraaptor™ A6500 Wrap Printer Applicator

In a contradictory way, our increasingly wireless world is requiring more and more wires and cables. Keep up with the pace with the Wraaptor A6500 Wrap Printer Applicator and wrap up your identification fast. This innovative machine allows you to print and apply your self-laminating wrap labels in as little as five seconds so you can efficiently move through your work. You also get:

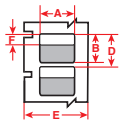
- **Connectivity options** — three USB ports and 32GB of internal memory to store your commonly used jobs
- **Identification options** — identify wires and cables from 0.060 to 0.600 in. diameter with one machine



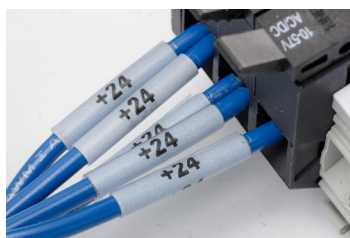
B-417 Self-Laminating Vinyl Wire Material

Color: White / Clear Finish: Matte

Self-laminating wire markers with **extra-strong adhesive** making them ideal for small diameter wires. This material features a white printable area with a clear “tail” that wraps around marker. Tail serves as overlaminates to protect the print. Superior resistance to abrasion, solvents, water, oil and dirt.



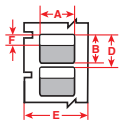
Catalog #	Wire Gauge (in. - in.) dia.	Label Width A Inch (mm)	Label Height B Inch (mm)	Vert. Repeat D Inch (mm)	Web Width E Inch (mm)	Write On Area F Inch (mm)	Labels Per Row	Labels Per Pkg	Rec. Ribbon
WRAP-1-417	18-22g; 0.06 - 0.08	0.500 (12.7)	0.750 (19.1)	0.875 (22.2)	0.790 (20.1)	0.375 (9.5)	1	6800	R4311
WRAP-2-417	12-18g; 0.08 - 0.159	1.000 (25.4)	1.000 (25.4)	1.125 (28.6)	1.290 (32.8)	0.375 (9.5)	1	5300	R4306
WRAP-4-417	6-14g; 0.159 - 0.279	1.000 (25.4)	1.500 (38.1)	1.625 (41.3)	1.290 (32.8)	0.500 (12.7)	1	3600	R4306
WRAP-10-417	1/0-8g; 0.239 - 0.438	1.000 (25.4)	2.250 (57.2)	2.375 (60.3)	1.290 (32.8)	0.750 (19.1)	1	2500	R4306
WRAP-5-417	1/0-8g; 0.239 - 0.517	1.000 (25.4)	2.500 (63.5)	2.625 (66.7)	1.790 (45.5)	0.750 (19.1)	1	2200	R4306



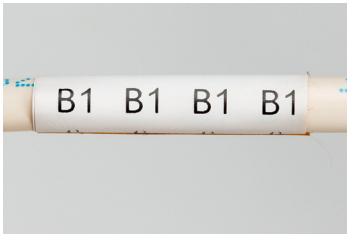
B-427 Self-Laminating Vinyl Wire Material

Color: White / Clear Finish: Matte

Self-laminating wire marker features white printable area with a clear “tail” that wraps around marker. Tail serves as overlaminates to protect the print. Superior resistance to abrasion, solvents, water, oil and dirt.



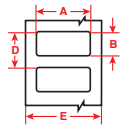
Catalog #	Wire Gauge (in. - in.) dia.	Label Width A Inch (mm)	Label Height B Inch (mm)	Vert. Repeat D Inch (mm)	Web Width E Inch (mm)	Write On Area F Inch (mm)	Labels Per Row	Labels Per Pkg	Rec. Ribbon
WRAP-1-427	18-22g; 0.06 - 0.08	0.500 (12.7)	0.750 (19.1)	0.875 (22.2)	0.790 (20.1)	0.375 (9.5)	1	6800	R4311
WRAP-2-427	12-18g; 0.08 - 0.159	1.000 (25.4)	1.000 (25.4)	1.125 (28.6)	1.290 (32.8)	0.375 (9.5)	1	5300	R4306
WRAP-3-427	10-14g; 0.159 - 0.199	1.000 (25.4)	1.250 (31.8)	1.375 (34.9)	1.290 (32.8)	0.500 (12.7)	1	4300	R4306
WRAP-11-427	6-14g; 0.159 - 0.279	0.500 (12.7)	1.500 (38.1)	1.625 (41.3)	0.790 (20.1)	0.500 (12.7)	1	3600	R4311
WRAP-4-427	6-14g; 0.159 - 0.279	1.000 (25.4)	1.500 (38.1)	1.625 (41.3)	1.290 (32.8)	0.500 (12.7)	1	3600	R4306
WRAP-12-427	6-14g; 0.159 - 0.279	2.000 (50.8)	1.500 (38.1)	1.625 (41.3)	2.290 (58.2)	0.500 (12.7)	1	3600	R4302
WRAP-10-427	1/0-8g; 0.239 - 0.438	1.000 (25.4)	2.250 (57.2)	2.375 (60.3)	1.290 (32.8)	0.750 (19.1)	1	2500	R4306
WRAP-5-427	1/0-8g; 0.239 - 0.517	1.000 (25.4)	2.500 (63.5)	2.625 (66.7)	1.790 (45.5)	0.750 (19.1)	1	2200	R4306
WRAP-6-427	3/1-6g; 0.318 - 0.597	2.000 (50.8)	3.000 (76.2)	3.125 (79.4)	2.290 (58.2)	1.000 (25.4)	1	1900	R4302



B-472 Polyimide Wirewrap Material

Color: White **Finish: Matte**

Polyimide wire and cable wirewrap material specifically designed to self-extinguish and prevent flames from propagating. This material is ideal for wire and cable identification in extreme environments, particularly in the aerospace, defense and mass transit industries.



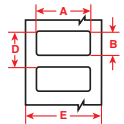
Catalog #	Wire Gauge (in. - in.) dia.	Label Width A Inch (mm)	Label Height B Inch (mm)	Vert. Repeat D Inch (mm)	Web Width E Inch (mm)	Labels Per Row	Labels Per Pkg	Rec. Ribbon
WRAP-1-472	10-14g; 0.159 - 0.199	0.750 (19.1)	0.500 (12.7)	0.875 (22.2)	0.790 (20.1)	1	6800	R4311
WRAP-6-472	3/0-8g; 0.212 - 0.597	2.000 (50.8)	3.000 (76.2)	3.125 (79.4)	2.290 (58.2)	1	1900	R4302



B-499 Nylon Cloth Material

Color: White **Finish: Matte**

Nylon cloth with permanent adhesive allows labeling in environments with heat, cold, oil and dirt. Ideal for wire and cable marking.



Catalog #	Wire Gauge (in. - in.) dia.	Label Width A Inch (mm)	Label Height B Inch (mm)	Labels Per Row	Labels Per Pkg	Rec. Ribbon
WRAP-7-499	10-22g; 0.06 - 0.199	0.500 (12.7)	0.750 (19.1)	1	4500	R4311
WRAP-13-499	6-14g; 0.159 - 0.279	1.000 (25.4)	1.000 (25.4)	1	4100	R4306
WRAP-8-499	2-14g; 0.159 - 0.438	1.000 (25.4)	1.500 (38.1)	1	2800	R4306
WRAP-9-499	3/0-8g; 0.212 - 0.597	2.000 (50.8)	2.000 (50.8)	1	2100	R4302



Wraptor™ A6500 Print Ribbons (1.000 in. core, ink side out)

Ribbon Series	Catalog #	Size Inch x Foot (mm x m)	Color
R4300 Wax / Resin Strong environmental resistance against smearing and chemicals. Also, reliable, sharp-edge print quality to maximize barcode readability.	R4311	1.000 x 984 (25.4 x 299.9)	Black
	R4306	1.570 x 984 (39.8 x 299.9)	Black
	R4302	2.360 x 984 (59.9 x 299.9)	Black

Part numbers and specifications

Catalog #	
WRAPTOR-A6500	Wraptor A6500 Wrap Printer Applicator* with Brady Workstation Product and Wire ID Suite
WRAPTOR-VBLK	Spare wrapper assembly pad
Specifications	
Typical throughput / operational hours	7000+ labels / day, 24 hours / 7 days
Print technology and color capabilities	Thermal Transfer; Monochrome
Print resolution	300 dpi
Max print width	2.000 in.
Media widths	0.500 in., 1.000 in., 2.000 in.
Minimum label dimension	0.500 in. W x 0.750 in. L
Auto cut-off	N/A
PC connect or stand alone operation	PC connect or stand alone
Ribbon and material installation	Labels: Loose roll, "thread-thru" required Ribbon: Loose roll, "thread-thru" required
Label creation and set-up	Semi-automatic (select label part from software and label sets up)
Connectivity options	Standard: USB, Ethernet 10/100
Compatible PC software	Labelmark™ Software, Brady Workstation

* Printer includes print driver, USB cable, USB flash drive, stylus, product license key for Brady Workstation Product and Wire ID Suite, roll of WRAP-4-427, roll of R4302 ribbon.

For in-line cut and strip applications: Contact Brady at 1-888-272-3946. Special restrictions apply.

Free up your flagging time

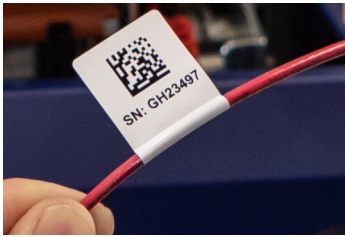


* BradyPrinter A5500 Flag Printer Applicator is patent pending.

BradyPrinter A5500 Flag Printer Applicator*

Just because wire diameters are decreasing, that doesn't mean the data needed to identify them decreases too. Adding a flag gives you the room for the data you need, but can also increase your identification time. Free up your flagging time with the BradyPrinter A5500 Flag Printer Applicator. With this forward-thinking machine you can print and apply your flags in as little as five seconds. You'll also improve other processes, including:

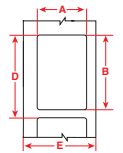
- **Consistent application** — labels are applied evenly without wrinkles, skew or edge mismatch to reduce rework
- **Connectivity options** — get your data to your machine in a variety of ways, including Wi-Fi
- **Reduce waste** — print and apply serialized labels as you go without having to go back and reprint a full batch if an error occurs



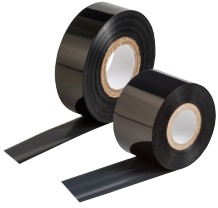
B-483 ToughBond Polyester Material

Color: White Finish: Gloss

Ultra aggressive polyester can be applied to powder-coated, smooth, textured or irregular surfaces. UL approved; CSA accepted. Service temperature of -40 to 248° F (-40 to 120° C).



Catalog #	Wire Gauge (in. - in.) dia.	Label Width A Inch (mm)	Label Height B Inch (mm)	Vert. Repeat D Inch (mm)	Web Width E Inch (mm)	Labels Per Row	Rec. Ribbon Series
A55-1-483	0.06 - 0.19	1.000 (25.4)	1.500 (38.1)	1.625 (41.2)	1.290 (32.7)	1	R6000
A55-2-483	0.06 - 0.19	1.500 (38.1)	1.500 (38.1)	1.625 (41.2)	1.790 (45.4)	1	R6000
A55-3-483	0.06 - 0.19	2.000 (50.8)	1.500 (38.1)	1.625 (41.2)	2.290 (58.2)	1	R6000
A55-4-483	0.13 - 0.50	1.000 (25.4)	2.500 (63.5)	2.625 (66.6)	1.290 (32.7)	1	R6000
A55-5-483	0.13 - 0.50	1.500 (38.1)	2.500 (63.5)	2.625 (66.6)	1.790 (45.4)	1	R6000
A55-6-483	0.13 - 0.50	2.000 (50.8)	2.500 (63.5)	2.625 (66.6)	2.290 (58.2)	1	R6000
A55-7-483	0.50 - 0.60	2.000 (50.8)	3.000 (76.2)	3.125 (79.3)	2.290 (58.2)	1	R6000



BradyPrinter A5500 Print Ribbons (0.830 in. core, ink side out)

Ribbon Series	Catalog #	Size Inch x Foot (mm x m)	Color
R6000 Halogen free, high density, excellent solvent resistance, high heat resistance, super scratch resistance.	SSR6006	1.575 x 984 (40.0 x 299.9)	Black
	SSR6002	2.360 x 984 (59.9 x 299.9)	Black

Part numbers and specifications

Catalog #	
A5500-NA-WIFI	BradyPrinter Flag Printer Applicator* with Wi-Fi and Brady Workstation Product and Wire ID Suite
A5500-NA	BradyPrinter Flag Printer Applicator* with Brady Workstation Product and Wire ID Suite
Specifications	
Typical throughput / operational hours	7000+ labels / day, 24 hours / 7 days
Print technology and color capabilities	Thermal Transfer; Monochrome
Print resolution	300 dpi
Max print width	2.000 in.
Media widths	1.000 to 2.000 in.
Minimum label dimension	1.000 in. width
Auto cut-off	N/A
PC connect or stand alone operation	PC connect or stand alone
Ribbon and material installation	Labels: Loose roll, "thread-thru" required Ribbon: Loose roll, "thread-thru" required
Label creation and set-up	Semi-automatic (select label part from software and label sets up)
Connectivity options	Standard: USB, Ethernet 10/100, Wi-Fi
Compatible PC software	Brady Workstation

* Printer includes print driver, USB cable, USB flash drive, power cable, product license key for Brady Workstation Product and Wire ID Suite, roll of A55-4-483, roll of SSR6002 ribbon.

For in-line cut and strip applications: Contact Brady at 1-888-272-3946. Special restrictions apply.

▶ Brady360® 1-Year Warranty

We have you covered.

Warranty coverage ensures your wire marking system is in peak running condition. We know you need to keep working, so you'll get a loaner to keep your business moving. With one year of coverage, you get:

- No cost ground shipping for all repairs
- Parts and labor included (excludes V-Block, but does include one print head)
- Loaner availability
- One annual Brady depot maintenance service



Software to make your label design, print and management easier

Brady Workstation Desktop Software

Brady Workstation is a combination of software suites that are designed to help you easily create and print labels. Check out these suites that were designed to make creating your wire and cable wraps and flags easy and efficient:



Product and Wire Identification Suite (software included)

When you need to create wire and cable markers, panel labels, and product labels this suite is your go-to solution. It allows you to create basic text labels or labels with graphics and custom formatting, and serialize and import data.



Data Automation Suite

Get the power to fully automate your label printing with this suite. Easily set up templates and import data to make label creation an automated and error-free process.



Scan and Print Suite

Consume data from a barcode scanner, keyboard or custom script to quickly populate your own custom label templates as part of a labeling workflow. Whether you need to re-label supplied parts for product assembly or label products based off work orders, this software suite can solve your workflow needs.

Other apps and suites are available:



1. Go to **Workstation.BradyID.com**.



2. Fill the workstation with the apps and suites you want.

For more information on Brady Workstation apps and suites, go to Workstation.BradyID.com.

We identify and protect premises, products and people.

For more information or to learn more about our innovative products, visit BradyID.com or call 1-888-272-3946.



Y4830305 MS4830305

USA
Customer Service: 1-888-272-3946
Inside Sales: 1-888-311-0775
BradyID.com

Canada
Customer Service: 1-800-263-6179
BradyCanada.ca

Mexico
Customer Service: 1-800-262-7777
Inside Sales: 1-800-262-7777 ext 177
BradyLatinAmerica.com

